

Mapping the Research Support at the University of Turku

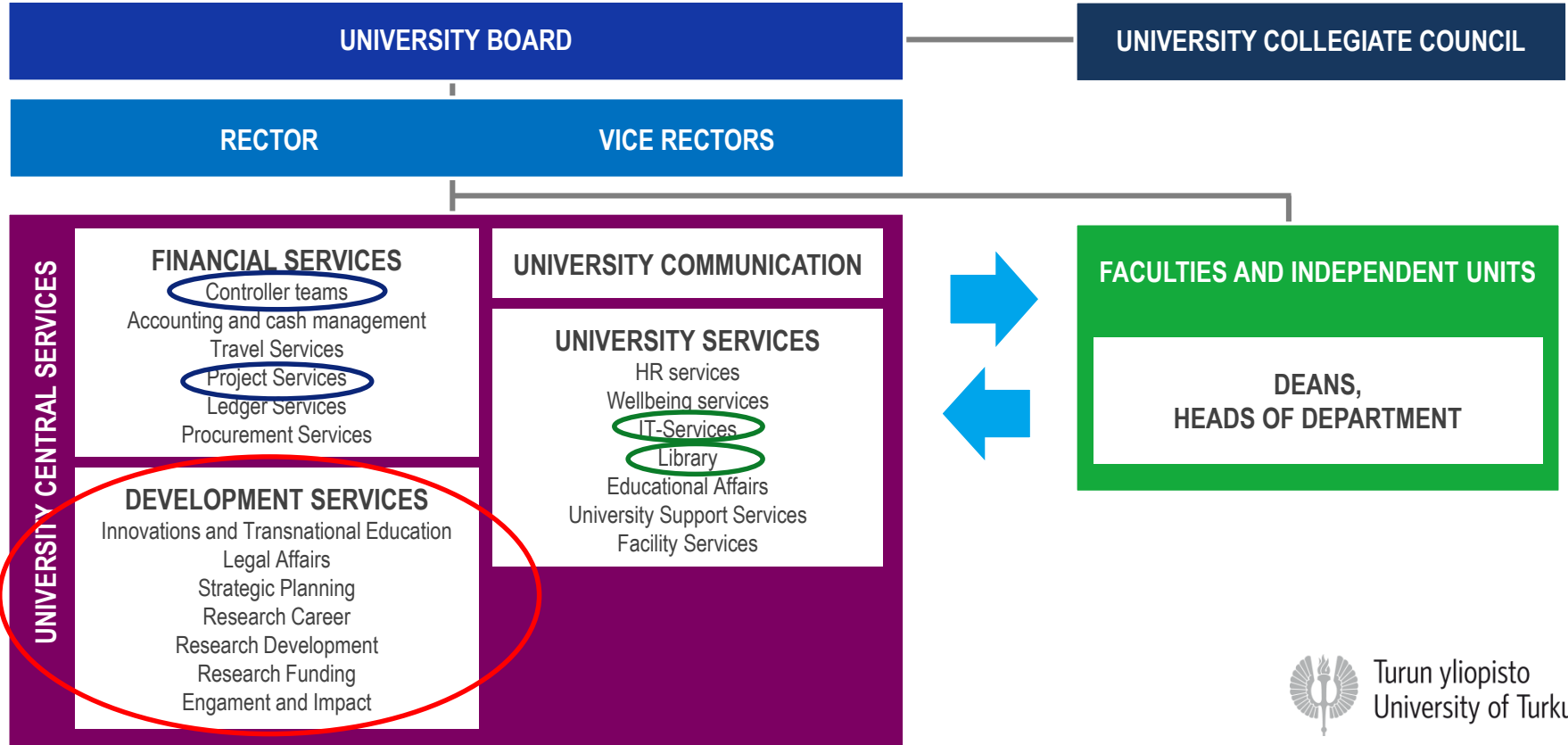
PhD Mari Riipinen
Head of Unit, Research Development



Turun yliopisto
University of Turku



ORGANIZATION



CAMPUS SERVICE POINTS

LOWER CAMPUS SERVICE CENTRE

EDUCARIUMIN SERVICE POINT

- Faculty of Social Sciences
- Faculty of Education

TURKU SCHOOL OF ECONOMICS SERVICE POINT

- Faculty of Law
- Turku School of Economics

UNIVERSITY HILL SERVICE CENTRE

MAAHERRAN MAKASIINI

- Sciences and Engineering
- ESO-centre
- Centre for Languages
- University Central Services

SIGNUMIN SERVICE POINT

- Faculty of Humanities

KUPITTAA SERVICE CENTRE

MEDISIINA SERVICE POINT

- Faculty of Medicine
- PET-Centre

BIOCITY SERVICE POINT

- Turu Centre for Biotechnology
- Brahea Centre
- Biocity, Pharmacity, Datacity



SERVICE CENTRES

LOWER CAMPUS

Educarium

- HR 5
- Financial 4
- Development 8
- Communication 1
- Total 18

Turku School of Economics

- HR 4
- Financial 5
- Development 4
- Total 13

UNIVERSITY HILL

Main building

- HR 4
- Financial 8
- Development 10
- Total 22

Signumin

- HR 4
- Financial 2
- Development 3
- Communication 1
- Total 10

KUPITTA

Medisiina

- HR 6
- Financial 9
- Development 8
- Total 23

Biocity

- HR 2
- Financial 9
- Communication 1
- Total 12

PORI JA RAUMA

- HR
Pori 1, Rauma 2
- Financial
Pori 3, Rauma 1
(Turku Normal School
0,5)
- Total 7,5

Development Services

Riitta Mustonen

Strategic Planning, Markku Sutinen

Engagement and Impact, Jani-Matti Lehto

Research Funding, Soile Haverinen

Research Development, Mari Riipinen

Legal Affairs, Eeva Ryödi

Innovations, Entrepreneurship, Transnational Education, Anne Marjamäki

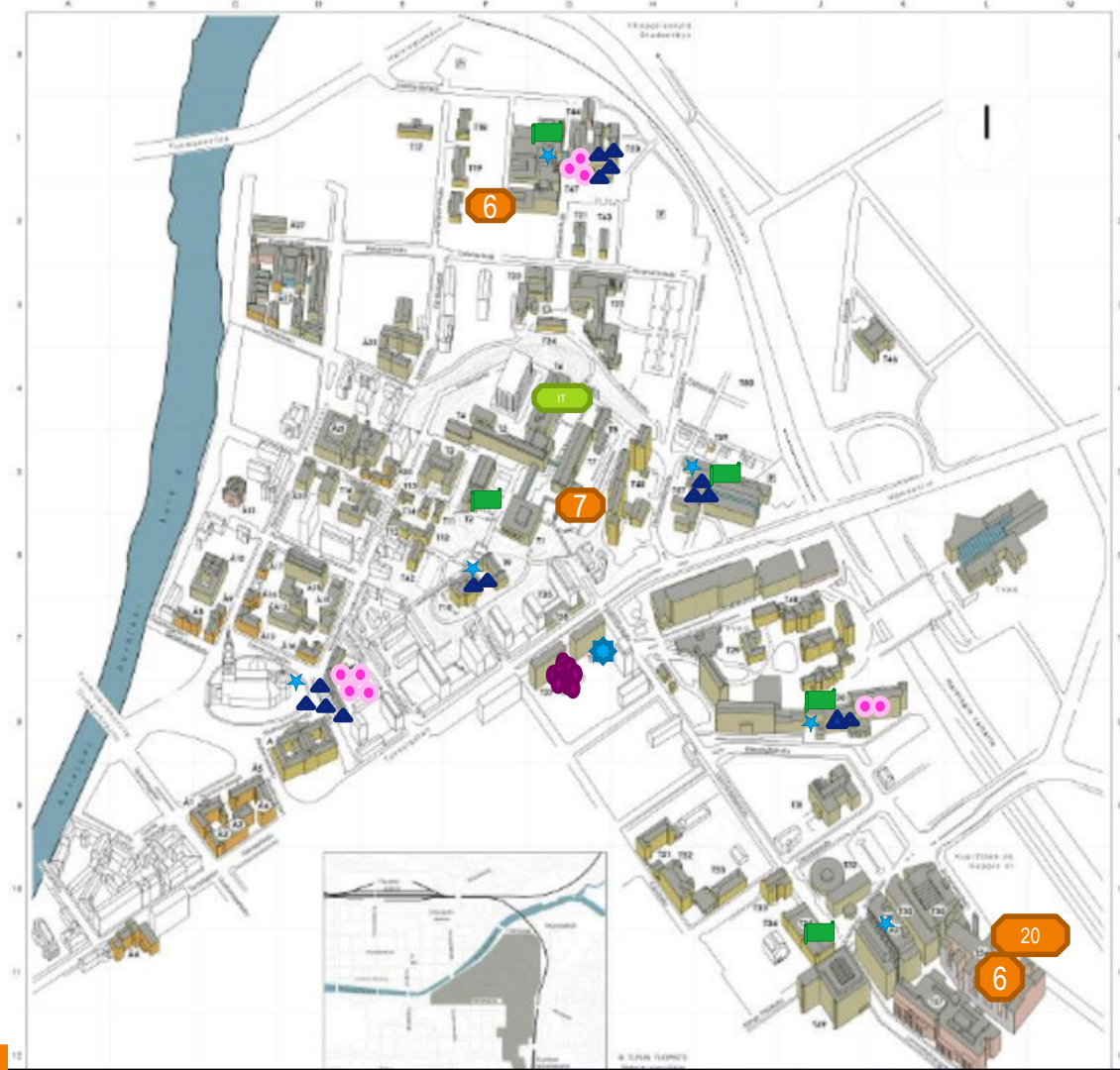
Research Career, Elise Pinta



Turun yliopisto
University of Turku

NAME OF THE UNIT	MAIN TASKS	ACADEMIC STEERING	PEOPL	LOCATON
Strategic planning	<ul style="list-style-type: none"> - Strategy - Yearly planning and budgeting - Ministry' steering and reporting 	<ul style="list-style-type: none"> - Rector - Deans 	1+2	Main building
Engagement and Impact	<ul style="list-style-type: none"> - Strategic partnerships and international cooperation - Quality Audit, RAE, Rankings - Alumni, 	<ul style="list-style-type: none"> - Rector - Vice Rector for Research - Vice Rector for Education 	1+8	At Campus mainly in one place
Research Funding	<ul style="list-style-type: none"> - Funding opportunities and infos - Funding applications, checking and preparing - Internal funding for application preparation - Funder's IT systems - Project coordination 	<ul style="list-style-type: none"> - Vice rector for Research - Deans - Heads of Department 	1+19	Service points
Research Development	<ul style="list-style-type: none"> - Open Science, Research Infrastructures, Data, Research Ethcs - IT- systems for Research , CRIS, KPI's for research - Support for PI's, - Strategic research projects 	<ul style="list-style-type: none"> - Rector - Vice rector for Research - Deans 	1+8	At Campus mainly in one place
Legal affairs	<ul style="list-style-type: none"> - Contract policies and risk management - Contract advice (research, exploitation, HR, buildings) - Juridical questions (IPR, GDPR, disputes) 	<ul style="list-style-type: none"> - Rector - Vice rector for research - Heads od department 	1+6	At Campus in one place
Innovations, Entrepreneurship, Transnational Education	<ul style="list-style-type: none"> - Identifying Inventions and innovations - Invention process - IPR-management ja commercialization - Transnational education - Entrepreneurship 	<ul style="list-style-type: none"> - Rector - Vice rector for research - Heads of department 	1+24	At Campus mainly in one place
Research Career	<ul style="list-style-type: none"> - PhD studies and programs: support and preparations - Research collegium coordination - PhD advisors and Young researcher's support 	<ul style="list-style-type: none"> - Vice rector for Education - Head of Doctoral School and Heads of Research collegium - Deans 	1+19	Service points

place
space
network



Conversation

- What is research support ?
 - Perhaps used to be one unit and now in many units?
 - What is the role of research funding services?
 - How does the network or cooperation work with for example pre award and financial services?
 - My experience: bigger role for library and IT-services. What is your experience?
- Are research support services necessary? What is the added value?