

# TOWARDS HUMAN SCALE CITIES OPEN AND HAPPY

15th biennial NECTAR conference  
University of Helsinki, Finland  
5-7 June 2019



HELSINGIN YLIOPISTO  
HELSINGFORS UNIVERSITET  
UNIVERSITY OF HELSINKI



# Towards human scale cities – open and happy 15<sup>th</sup> biennial NECTAR conference

## Conference program

Wednesday 5 June

**Conference registration**  
🕒 11:00-17:00

**Conference opening**  
🕒 13:00-13:30

**Keynote talk:  
Mikael Colville-Andersen**  
🕒 13:30-14:30

**Coffee break ☕**  
🕒 14:30-15:00

**Parallel sessions I**  
🕒 15:00-17:00

**Open NECTAR cluster meetings**  
🕒 17:00-18:00

**Welcome reception by the  
University of Helsinki**  
🕒 18:00-20:00

**Jatkot  
(unofficial get-together)**  
🕒 20:00-  
📍 Bryggeri Brewery  
👤 at own expense

Thursday, 6 June

**Keynote talk:  
Tim Schwanen**  
🕒 9:00-10:00  
📍 Think Corner

**Panel discussion**  
🕒 10:00-11:00  
📍 Think Corner

**Coffee break ☕**  
🕒 11:00-11:30 📍 Think Corner

**Open NECTAR cluster meetings**  
🕒 11:30-12:30

**Lunch 🍴**  
🕒 12:30-13:30

**Parallel sessions II**  
🕒 13:30-15:30

**Coffee break ☕**  
🕒 15:30-16:00

**Parallel sessions III**  
🕒 16:00-18:00

**Welcome reception by the City of Helsinki**  
🕒 19:00-20:00  
📍 Old Town Hall

**Experience the Helsinki Archipelago**  
🕒 20:00-0:30  
📍 Meeting point: Kauppatori Pier  
👤 Bring your sauna gear (towel, swimsuit, sandals)

Friday, 7 June

**Parallel sessions IV**  
🕒 9:30-11:00

**Coffee break ☕**  
🕒 11:00-11:30

**Parallel sessions V**  
🕒 11:30-12:30

**Lunch 🍴**  
🕒 12:30-13:20

**Parallel sessions VI**  
🕒 13:20-14:50

**Plenary session: NECTAR PhD Award**  
🕒 15:00-15:30

**Conference closing**  
🕒 15:30-16:00

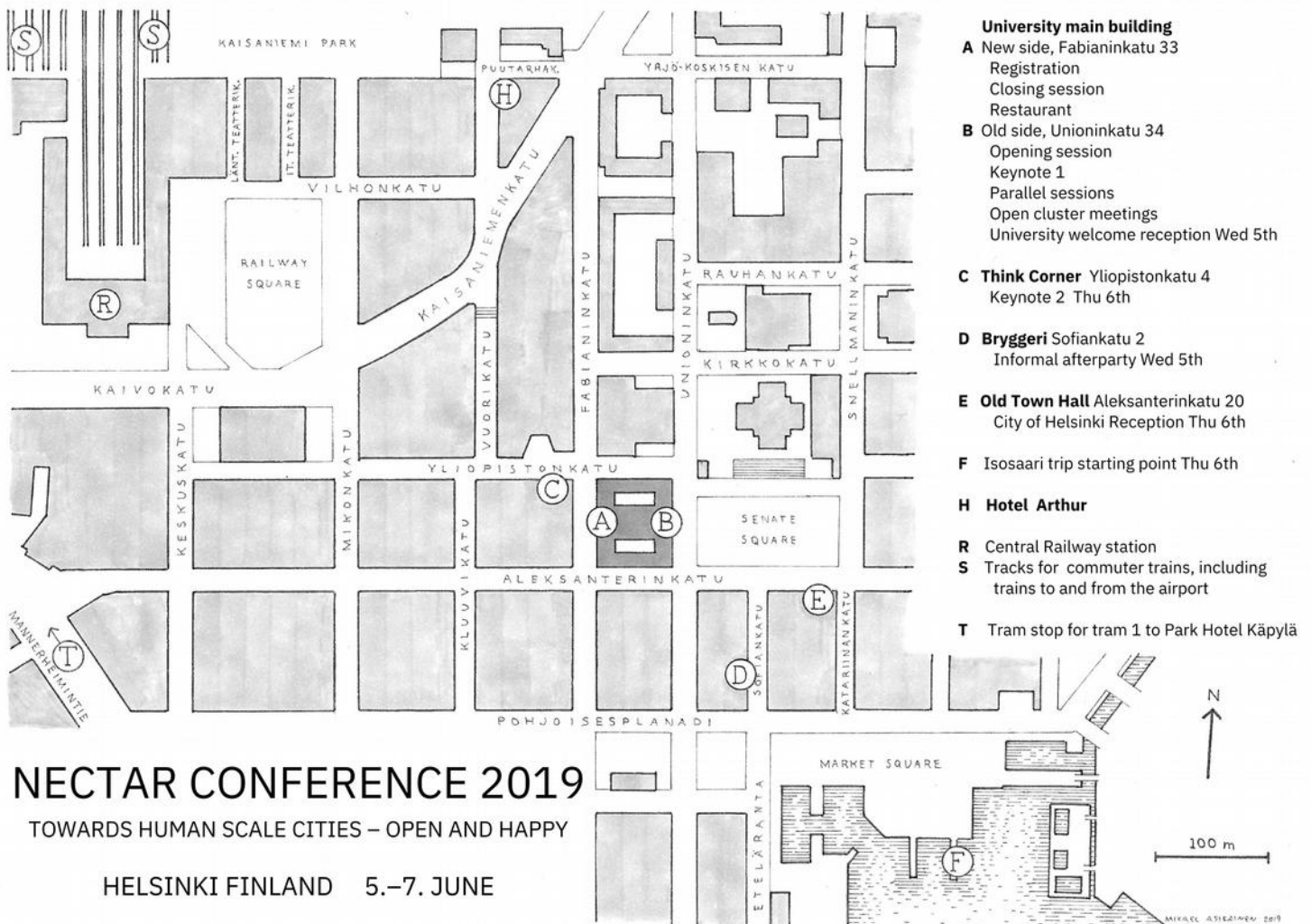
**Jätkäsaari visit:  
Renewed Waterfront**  
🕒 17:30-19:30  
📍 Meeting point: Clarion Hotel, *Living Room & Bar*

**Unofficial dinner**  
🕒 20:00-  
👤 at own expense

Note: The conference opening, keynote talks and panel discussion are open to stakeholders and the general public

## Conference venue and surroundings

(Please find floor plans of the University main building at the end of this booklet)



## Important information

**Emergency telephone number:** 112

**Conference emergency contact:** +358 50 3129 196

**Wireless network:** At all University of Helsinki sites, **eduroam** is available. Please use the credentials you use at your home institution. If your institution is not a partner in the eduroam network, you can connect to the (unencrypted) network **Univ Helsinki HUPnet** using the user name **hupnet118550** and password **jesper49uuzna**.

**Book of abstracts:** For the NECTAR conference 2019, there is a book of abstracts available in PDF format. Kindly download it from the conference website at <https://www.helsinki.fi/en/conferences/towards-human-scale-cities-open-and-happy/program>.

**Extended abstracts:** Presenters could choose to submit an extended version of their presentation's abstract. Extended abstracts are available from the NECTAR website at <http://www.nectar-eu.eu/2019-nectar-conference/> (Password NECTAR2019).

# Wednesday, 5 June 2019

11:00 **Registration**  
University of Helsinki main building (new side), Fabianinkatu 33, Aula

13:00 **Open plenary session**  
University of Helsinki main building (old side), Unioninkatu 34  
Great Hall (*Suuri Juhlasali*)

**Opening words by the chair of the local organising committee**  
Professor of Geoinformatics  
Tuuli Toivonen, *University of Helsinki*

**Opening words by the NECTAR chair**  
Karst Geurs, *University of Twente*

**Opening words by the City of Helsinki**  
Reetta Putkonen, *City of Helsinki*

## Keynote talk: Mikael Colville-Andersen

14:30 **Coffee break ☕**  
University of Helsinki main building (old side), Unioninkatu 34  
Etulämpö, 2<sup>nd</sup> floor

15:00 **Parallel sessions I**  
University of Helsinki main building (old side), Unioninkatu 34

**Widening Impact Analysis and Participation in Project Appraisal (CL1 Thematic Session)**  
Auditorium II

Chair: Robin Hickman

2  
Shoshanna Saxe, *University of Toronto*  
Timelines of urban transport infrastructure delivery: From idea to operation

3  
Mengqiu Cao, *University of Westminster*  
A bottom-up process for transport infrastructure evaluation: The wider 'intangible impacts' on choice of transport mode for residents living in Underground station areas

4  
Katy Indira Huaylla Sallo, *UCL*  
The political economy of street space reallocation: Aldgate Gyratory & Bank Junction, London

5  
Egor Kotov, *National Research University Higher School of Economics*  
The effects of introduction of the Moscow Central Circle rail passenger service: transport, urban, economic and travel behaviour consequences

**Spatial interaction and regional development (CL4 Thematic Session)**  
Auditorium III

Chair: Thomas de Graaff

7  
Jie Huang, *Chinese Academy of Sciences*  
Tracking job and housing dynamics with smartcard data

8  
Kees Maat, *Delft University of Technology*  
Dual car ownership as an effect of the residential and working locations

9  
Manuel Ojeda Cabral, *ITS - University of Leeds*  
Valuation and policy analysis using hedonic pricing with accessibility models: results and lessons learned for a large multi-city region

6  
Thomas de Graaff, *Vrije Universiteit Amsterdam*  
Housing market structure as barriers to moving residence: a multilevel approach

**Promoting valuable urban travel experiences based on personal mobility data (MoTiV Special Session)**  
Auditorium XIII

Heikki Waris, *CoReorient Oy*  
Welcome words

M1  
Yannick Cornet, *University of Žilina*  
Exploring worthwhile travel time in the MoTiV project and with the Woorti app

M2 Keynote  
Sami Sahala, *Forum Virium Helsinki Oy*  
Developing new mobility services for the Helsinki metropolitan area

**Panel and Q&A: How to enable data-driven MaaS and service development**  
Matti Hämäläinen, *Forum Virium Helsinki Oy*  
Stella Aaltonen, *City of Turku*  
Sami Sahala, *Ministry of Transport & Communications, FI*  
Moderator: Heikki Waris, *CoReorient Oy*

**Panel and Q&A: Challenges and learnings from app-based mobility research**  
Yannick Cornet, *University of Žilina*  
Heikki Waris, *CoReorient Oy*  
Miguel Barreda, *Eurecat Technology Centre*  
Moderator: Henriikki Tenkanen, *University College London*

M3  
Yannick Cornet, *University of Žilina*  
MoTiV research impact for promoting valuable urban travel experiences

M4  
Harri Paloheimo, *CoReorient Oy*  
Field experiences and advice on co-innovating solutions to urban challenges

17:00 **Open NECTAR cluster meetings 👥**  
University of Helsinki main building (old side), Unioninkatu 34

**Cluster 1**  
Auditorium II

**Cluster 2**  
Auditorium III

**Cluster 3**  
Auditorium XI

**Cluster 4**  
Auditorium IV

18:00 **Welcome reception by the University of Helsinki 🍷**  
University of Helsinki main building (old side), Unioninkatu 34  
Lehtisali & Etulämpö

**Opening words**  
Dean of the Faculty of Science, Professor in Computational Materials Physics  
Kai Nordlund, *University of Helsinki*

20:00 **Jatkot 🍷**  
Brewery *Bryggeri*, Sofiankatu 2  
Afterparty (at own expense)

Keynote speaker

## Mikael Colville Andersen



Mikael Colville-Andersen is one of the leading global voices in urbanism. He advises cities and businesses in how to design –and embrace– bicycle and pedestrian friendly streets in order to improve urban life. Mikael is known for his pioneering philosophies of simplifying urban planning and how cities and towns should be designed instead of engineered.

*Mikael is the author of Copenhagenize - the definitive guide to global bicycle urbanism and the host of the urbanism television series The Life-Sized City. His keynotes on how to make cities better inspire audiences around the world.*

Mikael Colville-Andersen will speak about how cities should be at the forefront of fighting climate change, the bicycle's primary role in this task and how this *Age of Urbanism* is inspiring citizens around the world.

### Accessibility impacts

📍 Auditorium XI

Chair: Steven Farber

🗨️ 10

Genevieve Boisjoly,  
*Polytechnique Montreal*

Assessing the impacts of accessibility by public transport and income on mode choice in Recife, Brazil

🗨️ 13

John Pritchard, *University of Twente/ Technion Institute of Technology*

The Impact of heterogeneous employment classes and workers on potential job accessibility estimation in the Netherlands

🗨️ 12

Borja Moya-Gómez, *tGIS | Universidad Complutense de Madrid*

Identifying causes of low urban accessibility

🗨️ 11

Steven Farber, *University of Toronto*

Planning Transportation for Social Inclusion: Quantifying the Accessibility-Activity Participation Relationship for Low-Income Households

### Human scale mobility innovations (CL8 Thematic Session)

📍 Auditorium IV

Chair: Emmanouil Tranos

🗨️ 14

Fabio Antonialli, *CentraleSupélec*

Governance of autonomous urban mobility platforms: a conceptual analysis within big data context

🗨️ 17

Luc Wismans, *University of Twente*

The governance of Smart Mobility: connected cyclists to traffic light controllers case

🗨️ 16

Milos Mladenovic, *Aalto university*

Governance through Participatory Expansion of Emerging Mobility Futures: Case of Self-Driving Vehicles

🗨️ 15

Maarit Kahila, *Aalto university*

Does mapping improve public participation? Exploring the pros and cons of using public participation GIS in urban and transportation planning practices

### Experiences & choices – mode, destination & well-being 1

📍 Auditorium XII

Chair: Yusak Susilo

🗨️ 18

Rumana Islam Sarker,  
*University of Innsbruck*

Applying affective event theory to explain transit users' reactions to service disruptions

🗨️ 19

Rebecca Shliselberg, *Tel Aviv University*

The Contribution of Motility to Women's Personal Wellbeing: A Quantitative Analysis

🗨️ 21

Jonas De Vos, *Ghent University, Geography Department*

Does moving to urban neighbourhoods result in happy travellers?

🗨️ 20

Yusak Susilo,  
*KTH Royal Institute of Technology*

Investigating the nature of Public Transport service attributes

### Cycling and bike-sharing

📍 Auditorium XVI

Chair: Andrés Monzón

🗨️ 79

Gustavo Romanillos,  
*Universidad Complutense de Madrid*

Analysing and modelling the location of stations in bike-share systems: planning the optimal growth of existing programs

🗨️ 81

Elias Willberg,  
*Digital Geography Lab, University of Helsinki*

Equity of bike sharing – lessons learned from Helsinki

🗨️ 80

Tom Thomas, *University of Twente*

Smartphone challenges to stimulate cycling: Clues from a Living Lab with SMART in Enschede

🗨️ 78

Lissy La paix, *University of Twente*

Spatial autocorrelation of pedestrian and bicycle crashes using network attributes and GPS-based smartphone data

Thursday, 6 June 2019

09:00 **Conference registration**  
University of Helsinki main building (new side), Fabianinkatu 33  
Aula

09:00 **Open plenary session**  
Tiedekulma/Think Corner, Yliopistonkatu 4  
Chair: Karst Geurs

### Keynote talk: Tim Schwanen

#### Panel discussion: "How to plan open and happy cities?"

Discussant: Tuuli Toivonen

Panelists:

Tim Schwanen, *Director of the Transport Studies Unit, Associate Professor in Transport Studies and Human Geography, University of Oxford*  
Milos Mladenovic, *Assistant Professor, Transportation engineering, Aalto University*  
Johanna Palomäki, *Planning Manager, City Of Espoo,*  
Jarkko Jaakkola, *Area Manager, Finland & Baltics, MaaS Global*

11:00 **Coffee break** ☕  
Tiedekulma/Think Corner, Yliopistonkatu 4

11:30 **Open NECTAR cluster meetings** 👥  
University of Helsinki main building (old side), Unioninkatu 34

**Cluster 5**  
Auditorium II

**Cluster 6**  
Auditorium III

**Cluster 7**  
Auditorium XI

**Cluster 8**  
Auditorium IV

12:30 **Lunch** 🍴  
University of Helsinki main building (new side), Fabianinkatu 33  
1<sup>st</sup> floor

13:30 **Parallel sessions II**  
University of Helsinki main building (old side), Unioninkatu 34

#### Widening Impact Analysis and Participation in Project Appraisal (CL1 Thematic Session)

Auditorium II

Chair: Imre Keserü

31

Jesse Pappers, *Vrije Universiteit Brussel*  
Learning through evaluation: the application of the Multi-Actor Multi-Criteria Analysis in co-creation to solve mobility problems

32

Stephan Tischler, *University of Innsbruck*  
New Railway Infrastructure Decision-Making: A Case Analysis Of Using Multi-Criteria-Analysis Based Methods For The Brenner-Corridor

30

Robin Hickman, *UCL*  
Testing the application of participatory MCA: a case study of the South Fylde Line, UK

33

Paulo Ancaes, *University College London*  
A new approach for the appraisal of roadspace allocation in major urban roads in Europe

#### Spatial interaction and regional development (CL4 Thematic Session)

Auditorium III

Chair: John Östh

34

Chia-Lin Chen, *University of Liverpool*  
High mobility in China? The impact of high-speed rail on work-related commuting: A case study of Suzhou-based commuters

35

Cristóbal Mendoza, *Universidad Autónoma Metropolitana-Iztapalapa*  
Everyday spaces of a group of skilled immigrants in Mexico: Geographies of comfort and restricted mobilities

36

Jean-Daniel Saphores, *University of California Irvine*  
Why Do They Live so Far From Work? Determinants of Long-Distance Commuting in California

37

Umut Türk, *Abdullah Gül University*  
How much does geography contribute? Measuring Inequality of Opportunities using a bespoke neighbourhood approach

#### Happiness through Accessibility (CL6 Thematic Session)

Auditorium XI

Chair: Ahmed El-Geneidy

39

Jonathan Levine, *University of Michigan*  
A Century of Evolution of the Accessibility Concept

38

Claudia Bergroth, *Digital Geography Lab, University of Helsinki*  
Incorporating dynamic population in accessibility research: a case study from Helsinki, Finland

41

Jean Ryan, *Lund University and K2*  
How to assess accessibility: subjective accounts, objective measures, or both?

40

Roberto Patuelli, *University of Bologna*  
The Role of Accessibility and Spatial Interaction in a Doubly Constrained Model: Evidence for Domestic Tourism Flows in Italy

Keynote speaker

**Tim Schwanen**

Dr. Tim Schwanen is Director of the Transport Studies Unit, Associate Professor of Transport Studies in the School of Geography and Environment, and Fellow at St. Anne's College.



*“Urban Mobility, Wellbeing and Inequality: Understanding the Relationships”*

The literature on transport and wellbeing is burgeoning, with many studies seeking to examine in particular the hedonic experience of travel behaviour. Research in this vein is a welcome and important complement to the conventional focus on cost, speed, convenience and attitudes in transport studies.

Nonetheless, wellbeing as a concept is much broader than hedonic experience or indeed subjective experience, and transport studies can benefit from harnessing and advancing other conceptions. This is particularly important if transport scientists want to consider questions of inequality and justice alongside or as part of wellbeing, and understand the transport-wellbeing nexus in cities across the planet.

Cities are, after all, not only the sites where most people live and sustainable mobility might be achieved most easily but also the places where inequalities run deepest. This presentation will elaborate a transport-related conception of wellbeing that is eudaimonic and rooted in Amartya Sen's capability approach yet also moves beyond this to consider the relational, emergent and experiential nature of capabilities as they relate everyday mobility.

To this end the presentation will also draw on and rework on the concepts of 'motility' and 'spaces of wellbeing'. It will utilise empirical research about cycling and walking in São Paulo and London to illustrate salient aspects of the interrelations between wellbeing and travel behaviour. One insight emerging from this manner of thinking is that wellbeing cannot be understood as inhering in individuals but rather is an always-emergent quality of shifting configurations of humans and all kinds of other urban elements.

#### Changing landscapes of mobility for future social and health inequalities (CL7 Thematic Session)

📍 Auditorium IV

Chair: Tanu Priya Uteng

📄 42

Maria Attard, *University of Malta*

The inequalities of a car-based transport system in Malta

📄 43

Jessica Berg, *Swedish national road and transport research institute VTI*

How can public transport contribute to social equity? A study of mobility in socially deprived urban areas in Sweden

📄 44

David Duran-Rodas, *TUM*

Spatial (in)justice in bike sharing systems: Built environment and social factors analysis among residential areas

📄 45

Ignacio Tiznado Aitken, *Pontificia Universidad Católica de Chile*

Exploring the use of qualitative data to enhance the understanding of accessibility through public transport

#### Experiences & choices – mode, destination & well-being 2

📍 Auditorium XII

Chair: Ann Verhetsel

📄 47

Saidul Chowdhury, *Sweco Nederland BV*

Intrapersonal Variation in Destination Choice

📄 46

Lars Böcker, *University of Oslo*

Access, egress and transfers in multimodal public transport: Implications for subjective wellbeing and en route place valuation

📄 48

Marie-José Olde Kalter, *Goudappel*

*Coffeng / University of Twente*  
Dynamics in mode choice behaviour: the relationship between trip distance and changes in mode use variation

📄 49

Ann Verhetsel, *University Of Antwerp*

Commuters' burden revisited: The relationship between travel time and well-being

#### Mobility-as-a-Service – case studies

📍 Auditorium XIII

Chair: Karst Geurs

📄 53

Bhavana Vaddadi, *KTH- Royal Institute of Technology*

Measuring system level effects of Corporate MaaS – A case study in Sweden

📄 50

Anna-Maria Feneri, *Technical University of Eindhoven*

Mobility-as-a Service in the Netherlands: The implementation of a Dynamic Choice Experiment to Examine Travel Behavior Adaptations

📄 52

Konstantinos Gkiotsalitis, *University of Twente*

Mobility-as-a-Service in a depopulating area: An exploration of small and big data

📄 51

Karst Geurs, *University of Twente*

Fancy some MaaS, Paleiskwartier? How residents in a densely populated neighbourhood in the Netherlands welcome the introduction of a Mobility-as-a-Service pilot and how it impacts on reducing parking needs

#### Tourism in Open and Happy Cities (CL5 Thematic Session)

📍 Auditorium XVI

Chair: Peter Nijkamp

📄 54

Antoni Domènech, *Universitat Rovira i Virgili*

First-time cruise tourists' intention to recommend a port city: space and time matter

📄 55

Ayelet Gal-Tzur, *Ruppin Academic Center*

Which tourists use public transport? panel data analysis

📄 56

Janika Raun, *University of Tartu*

The Role of Major Gateways on National Tourism Flows

📄 57

Ralph Wahnschafft, Frank Wolter, *Global Forum on Human Settlements*

Sustainability of waterborne transport in European tourist destination cities: Assessing experiences with battery-powered excursion boats



Thursday, 6 June 2019

● 15:30 **Coffee break ☕**

📍 University of Helsinki main building (old side), Unioninkatu 34  
Etulämpö, 2<sup>nd</sup> floor

● 16:00 **Parallel sessions III**

→ 18:00 📍 University of Helsinki main building (old side), Unioninkatu 34

**Planning the future of transport for sustainable, open and happy cities (CL2 Thematic session)**

📍 Auditorium II  
Chair: Maria Attard

🗨 58

Juan Francisco Coloma, *Universidad Politécnica de Madrid*  
Environmental strategies for selecting eco-routing in small cities

🗨 59

Lígia Conceição Pereira, *University of Porto, Faculty of Engineering*  
How transport planning in urban regions shall be addressed to integrate automated vehicles reality: a mixed traffic analysis

🗨 60

Olaf Jonkeren, *KiM Netherlands Institute for Transport Policy Analysis*  
Bicycle parking at railway stations for sustainable cities

🗨 61

Richard Quodamine, *City of Philadelphia*  
Towards a practical municipal investment paradigm: How do municipal governments prioritize access to municipal services through investment using GIS in both the short and long term?

**Accessibility modelling and the evaluation of EU-wide policies (Special session JRC)**

📍 Auditorium III  
Chair: Mert Kompil

🗨 65

Hugo Poelman, *European Commission - DG REGIO*  
Measuring daily accessibility by road and rail in Europe's regions and territories

🗨 63

Alexander Lembcke, *OECD Centre for Entrepreneurship, SMEs, Regions and Cities*  
Roads, market access and regional economic development

🗨 62

Mert Kompil, Aris Christodoulou, *European Commission, Joint Research Centre*  
Measuring accessibility and congestion in European cities

🗨 64

Dimitrios Papaioannou, *ITF-OECD*  
Measuring accessibility in urban Europe

**Happiness through Accessibility (CL6 Thematic Session)**

📍 Auditorium XI  
Chair: Benjamin Büttner

🗨 66

Jinhyung Lee, *The Ohio State University*  
Measuring reliable transit accessibility considering travelers' multi-criteria route choice

🗨 67

Amparo Moyano, *University of Castilla La Mancha*  
Assessing spatiotemporal variations of traffic congestion: comparison of 2012 and 2018 accessibility scenarios in Madrid

🗨 68

Elias Pajares, *Technical University Munich*  
GOAT: a dynamic and open accessibility tool for modelling and encouraging active mobility

🗨 69

David Vale, *University of Lisbon, Lisbon School of Architecture, CIAUD*  
How much are we overestimating accessibility by ignoring the cost of travel? Comparing multimodal effective accessibility for different income groups

● 19:00 **Welcome reception by the City of Helsinki 🇫🇮**

📍 Old Town Hall (*Vanha Raatihuone*), Aleksanterinkatu 20  
Empiresali

**Opening words**

Director, Urban Research and Statistics  
Timo Cantell, *City of Helsinki*

● 20:00 **Experience the Helsinki archipelago**

→ 00:30 📍 Meeting point: Kauppatori Pier  
Hosts: Elias Willberg, Henrikki Tenkanen, Tuomas Väisänen

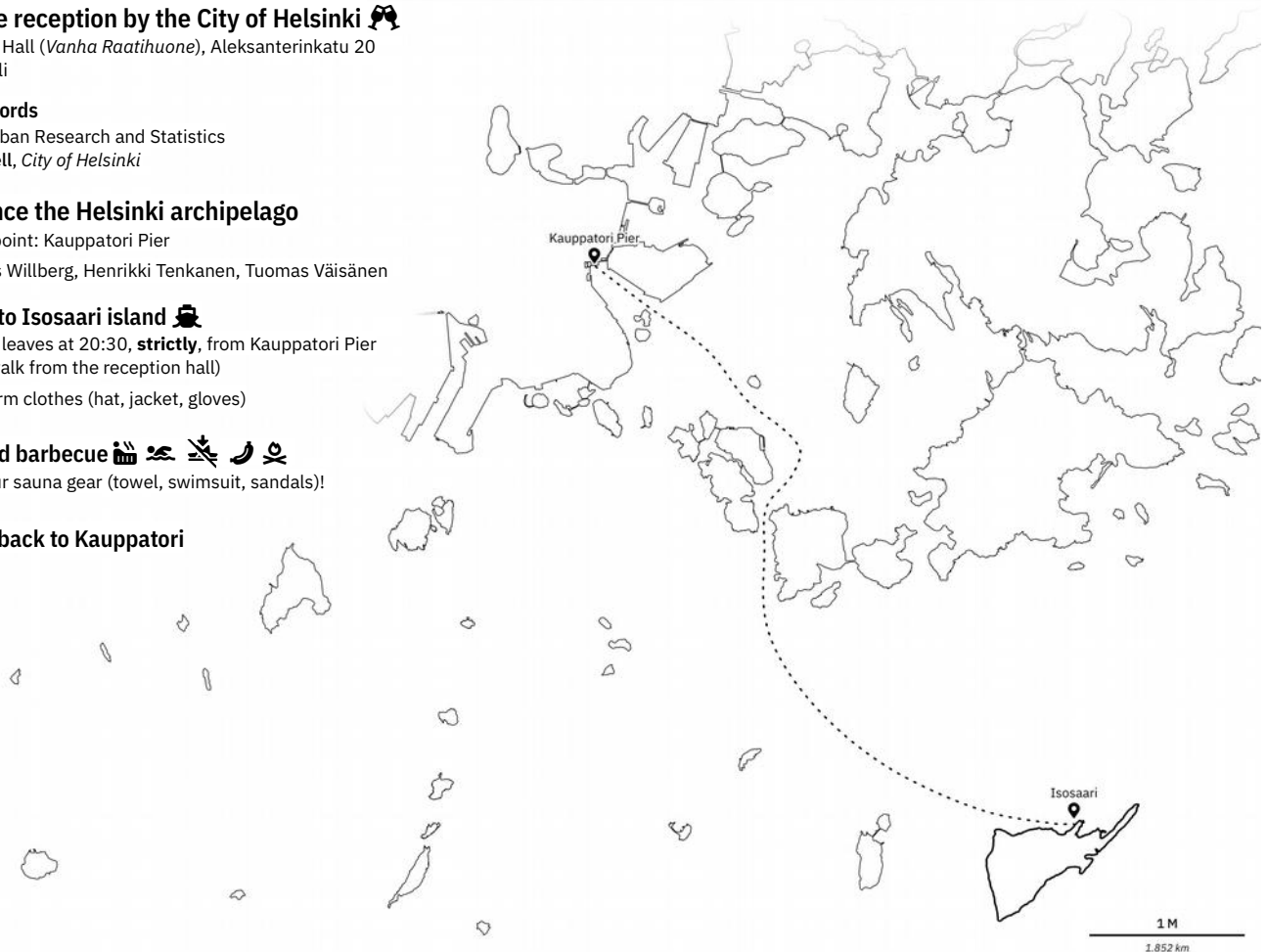
**Boat trip to Isoasaari island 🚤**

- The boat leaves at 20:30, **strictly**, from Kauppatori Pier (5 min. walk from the reception hall)
- Bring warm clothes (hat, jacket, gloves)

**Sauna and barbecue 🪵 🍖 🍷 🍺**

- Bring your sauna gear (towel, swimsuit, sandals)!

**Boat trip back to Kauppatori**





**Changing landscapes of mobility for future social and health inequalities (CL7 Thematic Session)**

📍 Auditorium IV

Chair: Michael Widener

🗨️ 70

Juan Carrasco, *Universidad de Concepcion*  
Accessibility to healthy food: A multi-method analysis approach from Chile

🗨️ 71

Daniel Oviedo Hernandez, *University College London*  
Drawing the (base)line: exploring the links between liveability and health equity in Cali's Corredor Verde

🗨️ 72

Marina Van Geenhuizen, *Delft University of Technology, Faculty of Technology, Policy and Management*  
Traffic Noise and Health Risk: What the Role of Citizen-Sensing May Be

🗨️ 73

Michael Widener, *University of Toronto*  
Comparing time use, transportation options, and dietary behaviours in three Toronto, Canada neighbourhoods: Initial results from the FASTT Survey

**Human mobility & social integration**

📍 Auditorium XII

Chair: Marina Toger

🗨️ 74

Carolina Duarte Gonçalves Ramos, *Architecture School of University of Lisbon*  
Walkability as an element of integration of public policies

🗨️ 75

Kamyar Hasanzadeh, *Aalto University*  
Monocentric, bicentric, or polycentric? The varying ways young and old adults use neighborhoods and extra-neighborhoods spaces in Helsinki Metropolitan Area

🗨️ 76

Kerli Müürisepp, *Digital Geography Lab, University of Helsinki*  
Human mobility as an indicator for integration? Big data to reveal socio-spatial interactions

🗨️ 77

Marina Toger, *Uppsala University*  
When people meet in cities how far do they integrate? Exploring mixing and functional use at various spatial scales

**Mobility-as-a-Service – challenges and opportunities**

📍 Auditorium XIII

Chair: Eric Miller

🗨️ 22

Rodrigo Gandia, *CentraleSupélec*  
Mobility as a Service (MaaS) Ecosystem: The Eco-Innovative Business Model of Mobility

🗨️ 23

Iria Lopez Carreiro, *TRANSyT - Universidad Politécnica De Madrid*  
Evaluating the implementation of a MaaS travel assistance App in metropolitan areas from travellers and urban stakeholders' point of view

🗨️ 25

Emmanouil Tranos, *University of Birmingham*  
The effect of Uber on Yellow Taxis in New York

🗨️ 24

Eric Miller, *University of Toronto*  
A Conceptual Framework for Modelling the Supply Side of Mobility Services within Large-Scale Agent-Based Models

**Tourism in Open and Happy Cities (CL5 Thematic Session)**

📍 Auditorium XVI

Chair: Luca Zamparini

🗨️ 82

José M. Coronado, *Universidad de Castilla - La Mancha*  
Pedestrian behaviour associated to specific events in small cities: assessing the behaviour of the FENAVIN conference attendees through GPS tracks in Ciudad Real

🗨️ 83

Kazuo Nishii, *University of Marketing and Distribution Sciences*  
Preconditions of introducing integrated mobility services in tourism destinations in Japan: Toward more attractiveness in urban tourism

🗨️ 84

Anthony Perl, *Simon Fraser University*  
Exploring the evidence on mobility and quality of life among Vancouver's hospitality workers

🗨️ 85

Luca Zamparini, *Università del Salento*  
Mobility at tourist destinations and everyday transport choices of young people: A cross-country survey



**Important information for the Helsinki archipelago experience**

Please bring warm clothes for the boat ride.

Please bring your own towel and swimming suit for the sauna.

Sauna is mixed between ladies and gentleman but there are separate dressing rooms.

You can swim from the sauna swimming pier.

Please do not swim alone.

Food is served at grilling spot

Drinks are served at sauna and grilling spot

Additional drinks can be bought at own expense from the restaurant

Return to the mainland departs at 23:45 sharp from main pier

Boat will arrive to Helsinki market square around 00:30.

9:30 **Parallel sessions IV**

University of Helsinki main building (old side), Unioninkatu 34

**Analysing cross-border mobility**

Auditorium II

Chair: Juan Carlos Martin

124

Maurizio Mussoni, *University of Bologna*

**Centralized vs Decentralized Tourism Policies: a Spatial Interaction Model Framework**

87

Olle Järv,

*Digital Geography Lab, University of Helsinki*

**Implementation of Big Data in cross-border mobility research: a Twitter case study from the Greater Region of Luxembourg**

88

Juan Carlos Martin,

*University of Las Palmas GC*

**A MCA-DEA method to measuring immigration openness in 23 countries. An analysis of the 2016 European Social Survey**

**New views on walkability**

Auditorium III

Chair: Milos Mladenovic

90

Noriko Otsuka, *ILS*

**Walkability assessment for the urban area around TEN-T railway stations**

91

Tuuli Toivonen,

*Digital Geography Lab, University of Helsinki*

**Modelling of healthy, equitable and sustainable urban accessibility**

89

Benjamin Büttner, *TUM*

**Access to Rail:**

**The Influence of Comfort on Accessibility**

**Mega events and transport**

**(Special session IGU)**

Auditorium XI

Chair: Richard Knowles

92

Marie Delaplace, *UPEM*

**Do the Olympics affect airline networks to the host city? The case of Rio de Janeiro**

94

Maciej Tarkowski, *University of Gdańsk*

**Can mega event help change the patterns of urban and regional mobility? A Case Study of Gdańsk – the co-host of the UEFA EURO 2012**

93

Richard Knowles,

*University of Salford, Manchester*

**Effects of the re-imposition of border checks on trans-Øresund commuting between Sweden and Denmark**

11:00 **Coffee break ☕**

University of Helsinki main building (old side), Unioninkatu 34  
Etulämpö, 2<sup>nd</sup> floor

11:30 **Parallel sessions V**

University of Helsinki main building (old side), Unioninkatu 34

**Green and electric cars (CL2 Thematic Session)**

Auditorium II

Chair: Maria Attard

107

Hans Nijland, *PBL*

**Electrification of the Dutch national car fleet**

108

Aviv Steren,

*Ben-Gurion University of the Negev*

**The clash of policies:**

**Do green cars affect driving behavior?**

**Revealing socio-economic equities**

Auditorium III

Chair: Renata Oliveira

114

Mauro Pereira, *Lisbon University*

**The socio-economic equity through built environment characteristics – The context of Metropolitan Area of Lisbon**

113

Renata Oliveira, *Federal Center for Technological*

*Education of Minas Gerais*

**Accessibility to food systems in Belo Horizonte, Brazil**

**Methods for analysing spatial accessibility patterns**

Auditorium XI

Chair: Henrikki Tenkanen

111

Albert Steiner,

*Zurich University of Applied Sciences*

**A Three-step Floating Catchment Area Method to Quantify the Spatial Accessibility of Healthcare Facilities for Citizens**

112

Henriikki Tenkanen,

*University College London*

**Where are the centers of a city?**

**A method to analyze centrality and modal equity of transport across city regions**

12:30 **Lunch 🍴**

University of Helsinki main building (new side), Fabianinkatu 33  
1<sup>st</sup> floor

13:20 **Parallel sessions VI**

→ 14:50 University of Helsinki main building (old side), Unioninkatu 34

**Property values & accessibility**

Auditorium II

Chair: John Nellthorp

123

Adam Radzimski,

*Adam Mickiewicz University in Poznań*

**The effects of public transport improvements on travel behaviour, housing choices and property values – evidence from a Polish city with new tram network**

**Tourism, perceptions and well-being**

Auditorium III

Chair: João Romão

86

Vuokko Heikinheimo,

*Digital Geography Lab, University of Helsinki*

**Estimating the origins and destinations of social media users for mobility studies: a critical comparison of measuring techniques**

**Wayfinding and navigation**

Auditorium XI

Chair: Dea Van Lierop

129

Christoffer Weckström, *Aalto university*

**Navigability - the forgotten dimension in public transport network overhaul assessment**

### The Logistics of Living in Cities (CL3 Thematic Session)

📍 Auditorium IV

Chair: Cathy Macharis

🗨️ 95

Alessandra Boggio Marzet, *TRANSYT-Universidad Politécnica de Madrid*  
Energy efficiency of urban freight in Madrid: comparison between urban and suburban deliveries

🗨️ 97

Dirk Wittowsky, *ILS - Research Institute for Regional and Urban Development*  
Blessing or Curse? How e-Commerce is Transforming our Cities and Mobility

🗨️ 96

Cathy Macharis, *Vrije Universiteit Brussel*  
The difficult road to decarbonizing the freight transport sector: a participatory exploration for Flanders

### Impacts of new infrastructures

📍 Auditorium XII

Chair: Joao De Abreu e Silva

🗨️ 98

Zhenhua Chen, *The Ohio State University*  
Socioeconomic Impact Assessments of High-Speed Rail: A Meta-Analysis

🗨️ 100

Elena Lopez, *UPM*  
Territorial cohesion impacts of HSR in Spain Learning from the past and planning future developments

🗨️ 99

Joao de Abreu e Silva, *Instituto Superior Técnico*  
The impact of motorway expansion on urban growth patterns: the case of Portugal between 1991 and 2011 (Orig. P.Melo)

### Telecommuting, e-shopping and accessibility

📍 Auditorium XIII

Chair: Rob Konings

🗨️ 102

Hannah Budnitz, *University of Birmingham*  
Telecommuting and the accessibility of amenities

🗨️ 101

Aldo Arranz-López, *University of Zaragoza*  
How e-shopping impacts on walking time-willingness to retail destinations

🗨️ 103

Rob Konings, *Delft University of Technology*  
Online grocery shopping and future accessibility of supermarkets

### Human scale mobility innovations (CL8 Thematic Session)

📍 Auditorium XVI

Chair: Luc Wismans

🗨️ 105

Imre Keseru, *Vrije Universiteit Brussel*  
Can we rely on data collected by motivated citizens? Advantages and limitations of citizen observatories for mobility

🗨️ 106

Robin Palmberg, *KTH Royal Institute of Technology*  
Uncovering Effects of Spatial and Transportation Elements on Travellers Using Biometric Data

🗨️ 104

Itzhak Benenson, *Tel Aviv University*  
Public transport travel patterns revealed from mining Israeli smart card data

### The Logistics of Living in Cities (CL3 Thematic Session)

📍 Auditorium IV

Chair: Cathy Macharis

🗨️ 109

Nicolas Brusselaers, *Vrije Universiteit Brussel - MOBI Research Centre*  
Air quality and freight transport in cities: a dynamic approach to measure the real impact

🗨️ 110

Victoria Muerza, *Zaragoza Logistics Center*  
Environmental and energy effectiveness of an urban freight distribution model, based on cohabitation between passengers and light goods in proximity rail transport, and last mile distribution integration with green vehicles (RailCarPack).

### Ride hailing

📍 Auditorium XII

Chair: Alejandro Tirachini

🗨️ 116

Rebekka Oostendorp, *German Aerospace Center (DLR), Institute of Transport Research*  
New mobility services in new residential areas: challenges and opportunities of measures for sustainable urban mobility

🗨️ 115

Alejandro Tirachini, *Universidad de Chile, Technische Universität München*  
Fixing the number of vehicles and/or setting a tax for ride-hailing? Insights from a social welfare maximisation approach

### Public transport planning as a means to improve accessibility

📍 Auditorium XIII

Chair: Milan Janić

🗨️ 117

Ahmed El-Geneidy, *McGill University*  
Planning a high-frequency transfer-based bus network: How do we get there?

🗨️ 118

Milan Janic, *Delft University of Technology*  
Analysis and modelling performance of the airport landside access transport modes and their systems

### Elderly mobility challenges

📍 Auditorium XVI

Chair: Anabela Ribeiro

🗨️ 119

Tanu Priya Uteng, *Institute of Transport Economics*  
Planning for elderly mobilities: How can car sharing aid the transition towards sustainable travel behaviour? Case of Oslo, Norway.

🗨️ 120

Anabela Ribeiro, *University of Coimbra*  
MOBI-AGE: Promoting urban mobility in ageing populations

### Cycling infrastructures

📍 Auditorium IV

Chair: Kevin Krizek

🗨️ 130

Jukka Krisp, *University of Augsburg*  
Sensor-based analysis of bike lane quality

### Autonomous and shared mobility

📍 Auditorium XII

Chair: Dick Ettema

🗨️ 133

Rami Darwish, *The Royal Institute of Technology - KTH*  
Lessons from a Driverless Bus Service Deployment on Public Roads in Stockholm

### Built environment, attitudes and travel behavior

📍 Auditorium XIII

Chair: Bert Van Wee

🗨️ 136

Joao de Abreu e Silva, *Instituto Superior Técnico*  
Effects of residential urban environment, social networks and social influence on travel behaviour of university students

### Happy Cities: The Home of People (Special Session Regional Science Academy)

📍 Auditorium XVI

Chair: Aura Reggiani

🗨️ 141

John Östh, *Uppsala Universitet*  
My home is my castle

## Friday 7 June 2019

🗨️ 121

Christopher Leahy, *University of Leeds*  
Modelling large-scale multi-modal accessibility impacts on residential property prices in a polycentric region

🗨️ 125

Concepción Román,  
*University of Las Palmas GC*  
The residents' perception in Gran Canaria: A mature mass tourist destination.

🗨️ 127

Anthony Ferri,  
*Technical University of Munich*  
Making the Connection: Navigating through emotional and sensorial responses in public transit

🗨️ 122

John Nellthorpe, *Institute for Transport Studies, University of Leeds*  
Modelling and valuing local-scale accessibility and place quality using hedonic pricing methods in the housing market

🗨️ 126

João Romão, *University of Algarve*  
Tourism, smart specialization and well-being

🗨️ 128

Dea van Lierop, *Utrecht University*  
Wayfinding for e-bikes: Assessing e-bike users' experiences with wayfinding along a bicycle highway in the Netherlands

### 🕒 15:00 **Plenary session**

→ 16:00 📍 University of Helsinki main building (new side), Fabianinkatu 33  
Small Hall (*Pieni Juhlasali*), 4<sup>th</sup> floor

#### **NECTAR PhD Award 🎓**

Joram Langbroek, *KTH Royal Institute of Technology*  
Changing travel habits of electric vehicle users

#### **Conference closing sessions**

**Cluster wrap-ups**

**Invitation by the NECTAR 2021 conference organisers**

**Closing words**

### 🕒 17:30 **Jätkäsaari – renewal of an urban waterfront district**

📍 Meeting point: Clarion Hotel, Tyynenmerenkatu 2, *Living Room & Bar*  
Hosts: Olle Järv, Joel Jalkanen, Kerli Müürisepp

#### **Presentation “From cargo port to quality living” 🗨️**

📍 Jätkäsaari Library, Tyynenmerenkatu 1

#### **Walking tour 🚶**

📍 Jätkäsaari

#### **Rooftop sightseeing 🏠**

📍 Sightseeing terrace (Verkkokauppa), Tyynenmerenkatu 11

### 🕒 20:00 **Unofficial dinner 🍴**

📍 Restaurant *Hietalahti Market Hall*, Lönnrotinkatu 34  
social event (at own expense)

🗨 132

Cecilia Silva, *University of Porto*  
**Boosting Starter Cycling Cities: strategies and support to foster sustainable transport planning**

🗨 131

Kevin Krizek,  
*University of Colorado Boulder*  
**Channeling the human element to design our future streets**

🗨 135

Bat Hen Nahmias Biran, *ARIEL University*  
**Activity-Based Accessibility for Measuring Shared Mobility Impacts**

🗨 134

Dick Ettema, *Utrecht University*  
**Geography, culture and potential AV pathways and impacts: A comparison of Australia and the Netherlands**

🗨 137

Mayara Monteiro, *FEUP*  
**I know what you did last semester: Examining adaptation and travel behavior change among millennials short-term exchange students**

🗨 138

Bert van Wee,  
*Delft University of Technology*  
**Impacts of the built environment and travel behaviour on attitudes: theories underpinning the reverse causality assumption**

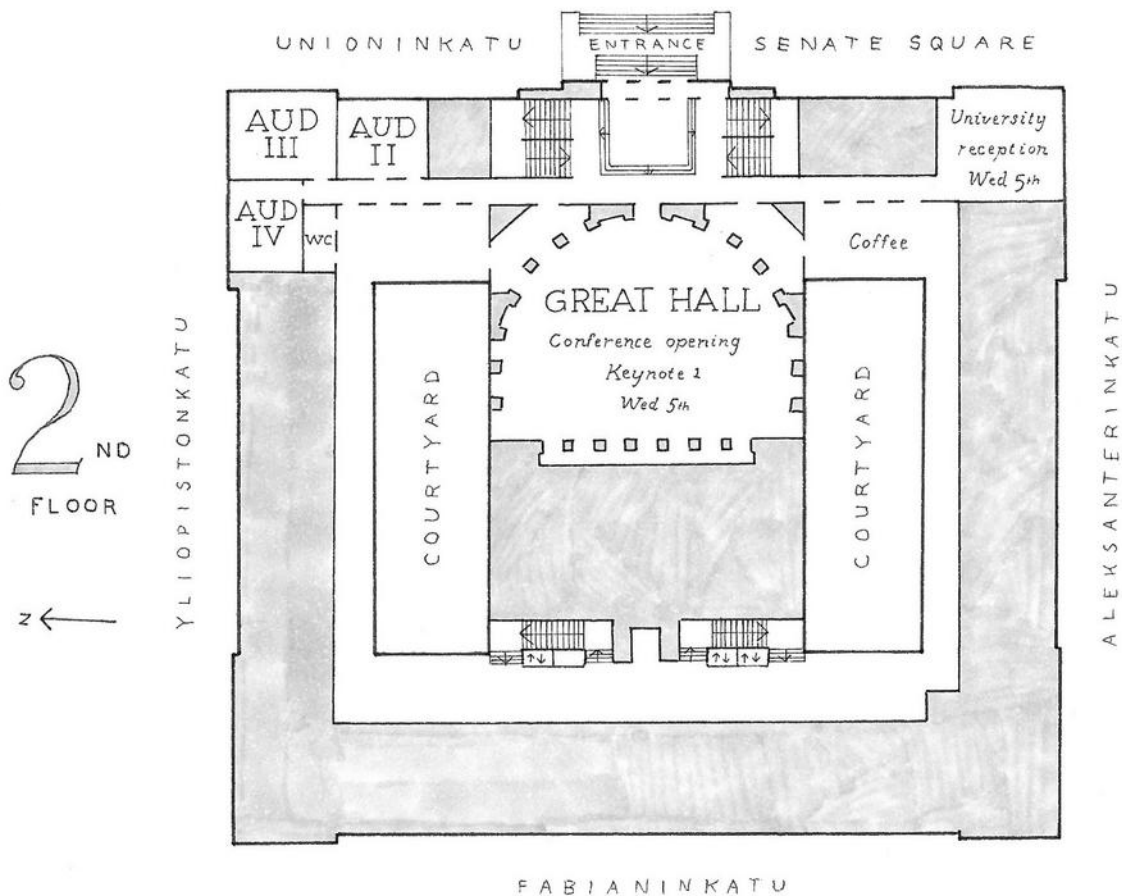
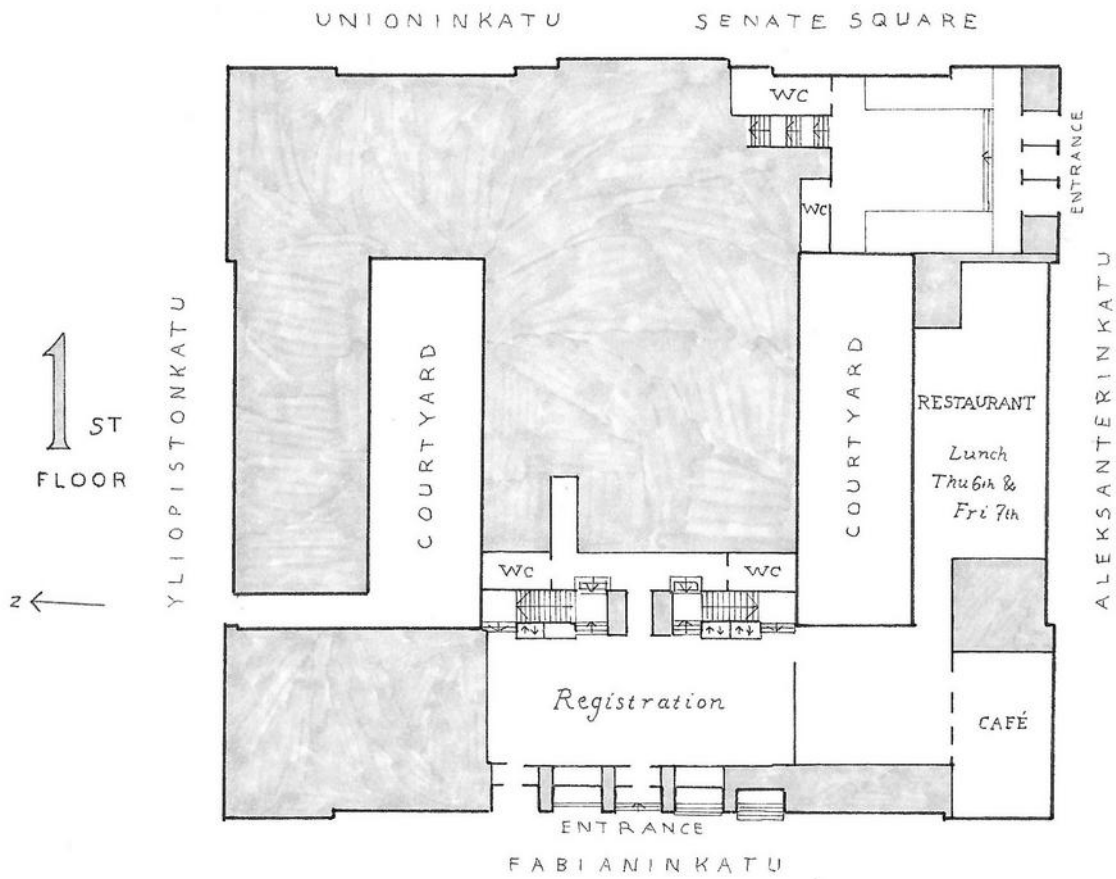
🗨 139

Karima Kourtit,  
*Vrije Universiteit Amsterdam*  
**Assessment of a city love production function**

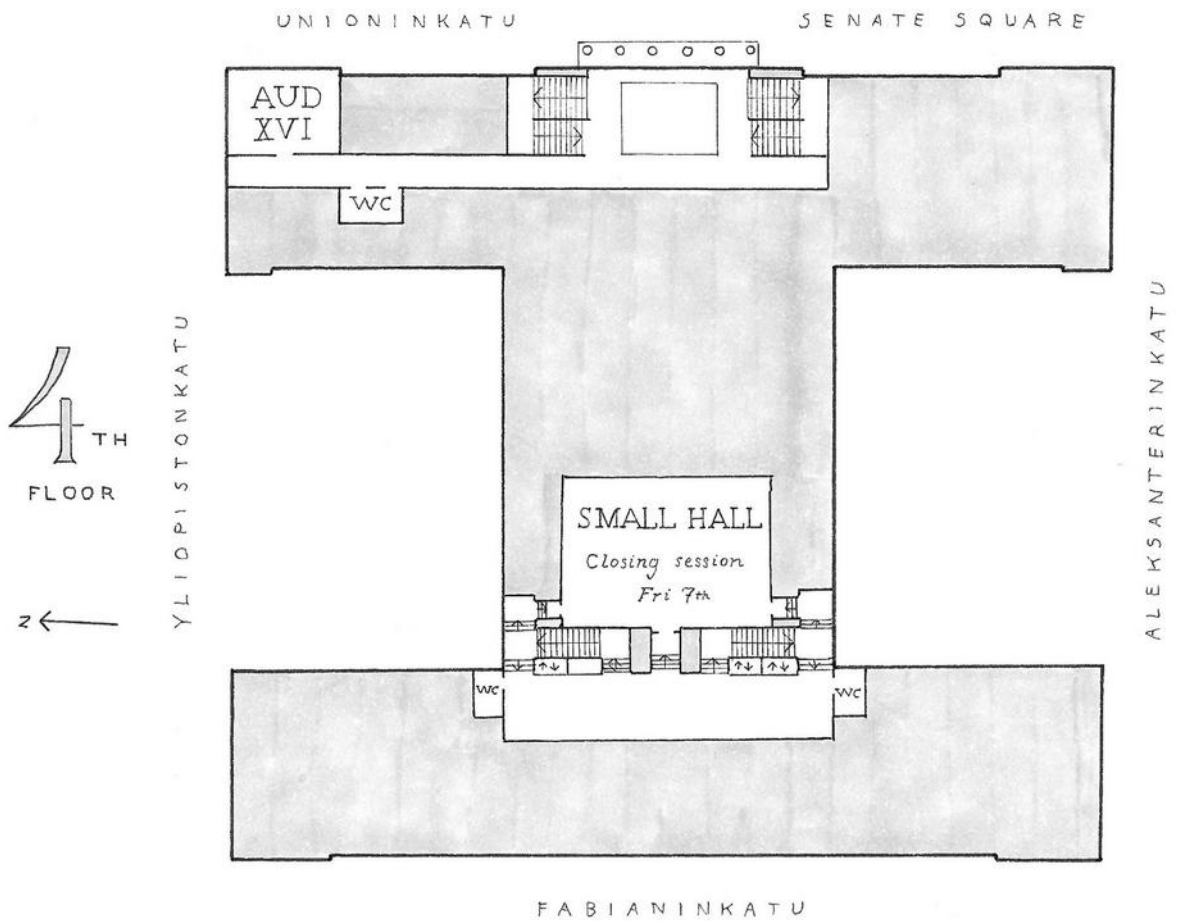
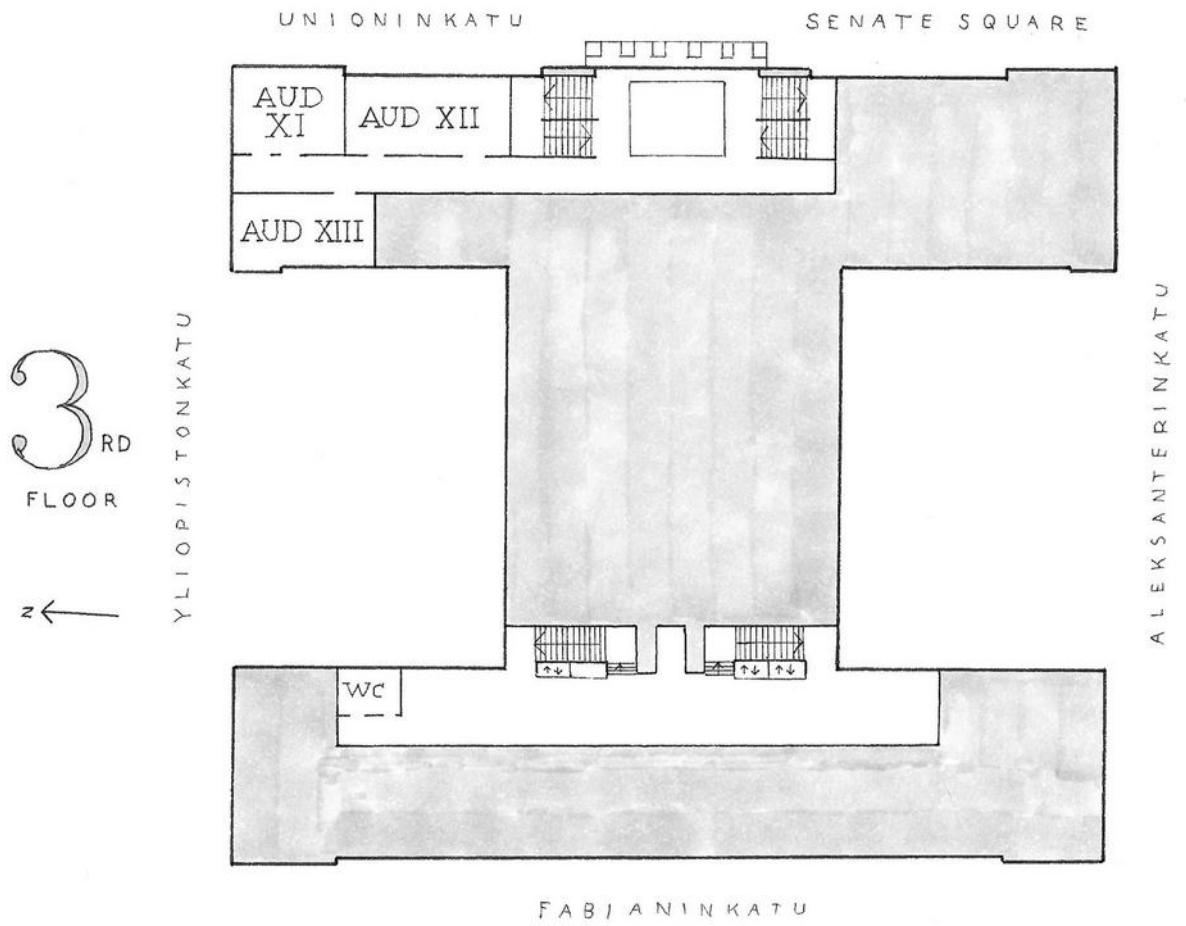
🗨 140

Peter Nijkamp,  
*Vrije Universiteit Amsterdam*  
**Urban culture as a magnet for foreign visitors**

# University of Helsinki main building



University of Helsinki main building





# #NECTAR2019

Supported by



HELSINGIN YLIOPISTO  
HELSINGFORS UNIVERSITET  
UNIVERSITY OF HELSINKI



MoTiV

