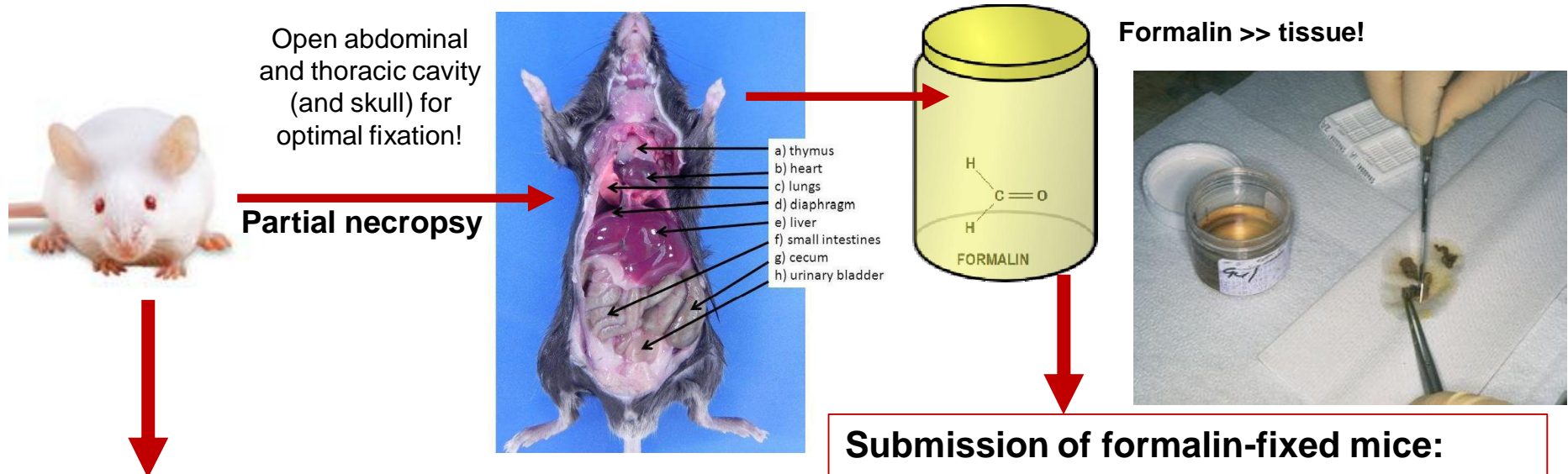


FCLAP:

Technical Services Work Flow:

Submission of carcasses



Submission of fresh, euthanised mice:

- Necropsy, histological examination and potential further tests undertaken by pathologists
- Optimal for **diagnostic purposes (i.e. spontaneous deaths)**
- Appropriate for **initial (screening) experiments**

Submission of formalin-fixed mice:

- Optimal for examination of **animals of which blood/organs/tissue samples have been collected for other tests**
- For screening purposes: necropsy and histological examination by pathologist
- **Selected organ** sampling for histology as appropriate; other organs available if needed
- Diagnostic examination of animals from containment facilities