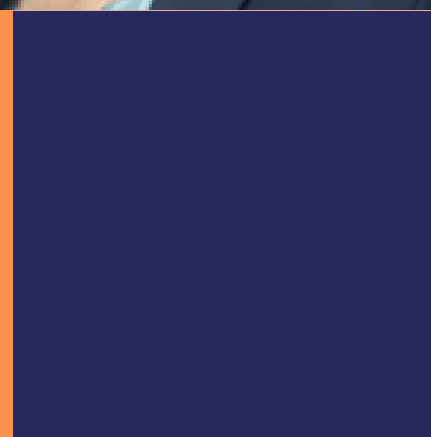
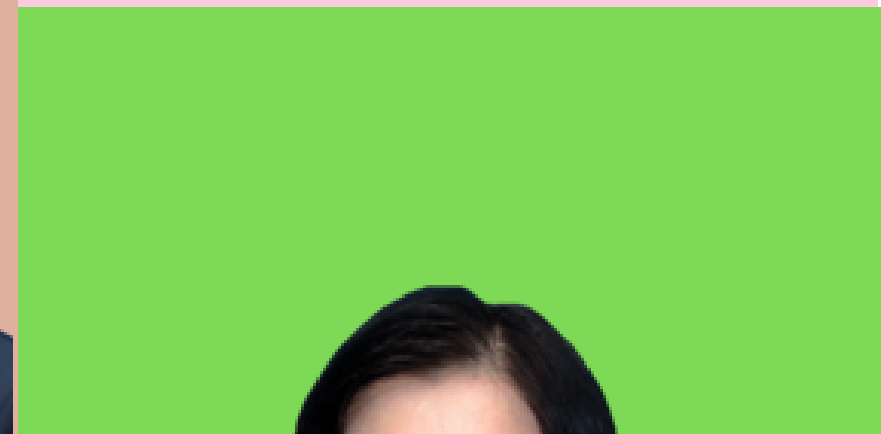




RILCA LINGUISTICS PROGRAM, MAHIDOL UNIVERSITY



Sophana Srichampa

RESEARCH AREA:

- Language and culture
- Language policy for unskilled migrant workers
- Vietnamese studies
- Indian studies



sophana@gmail.com

Associate
Professor

SELECTED RESEARCH/PUBLICATION:

- Managing Unskilled Migrant Workers' Language Diversity: The Multicultural Societies of Thailand, Malaysia and Singapore
- Language: Human Capital Empowerment for Migrant Workers in the ASEAN Multicultural Society
- Inter-Mixing Indianness with Thainess in Selected Thai Novels

Mayuree Thawornpat

RESEARCH AREA:

- Endangered languages revitalization
- Language and culture for development
- Sociolinguistics
- Educational linguistics
- Ethnolinguistics



mthawornpat@gmail.com

Assistant
Professor

SELECTED RESEARCH/PUBLICATION:

- Lavue Revitalization Project and Networks
- Encyclopedia of Ethnic Groups in Thailand :
Gong (Ugong)
- Encyclopedia of Ethnic Groups in Thailand : Mpi

Siripen Ungsitipoonporn

RESEARCH AREA:

- Chinese linguistics
- Hakka language and culture
- Educational linguistics
- Language documentation and revitalization
- Digital language archive



siripen.ung@mahidol.edu

Assistant
Professor

SELECTED RESEARCH/PUBLICATION:

- Digital Archiving of Languages and Cultures of Ethnic Groups of Thailand
- Digital Documentation of the botanical knowledge of Northern Khmer speakers: Linguists, botanists, and community members working together
- Transmission of Hakka traditional knowledge from two revitalization projects in Thailand: What did they achieve?

Pattama Patpong

RESEARCH AREA:

- Syntax
- Discourse analysis
- Language typology



ppattama@yahoo.com

Assistant
Professor

SELECTED RESEARCH/PUBLICATION:

- Documentary linguistic and cultural heritage: the case of Black Tai death ritual
- Construing the ecological perspective of the Tai Dam as seen in 'Sen Huen' ritual manuscripts. *Functional Linguistics*
- Thematic Progression of Thai Song Dam Folktales

Sumittra Suraratdecha

RESEARCH AREA:

- Sociolinguistics and development
- Anthrolinguistics
- Chinese linguistics
- Language teaching



sumittra_s@hotmail.com

Assistant
Professor

SELECTED RESEARCH/PUBLICATION:

- Engaging young people in the vernacular normalization of heritage language
- Benefits for Communities: The case of the Black Tai community in Thailand.
Language Revitalisation: A Practical Guide
- Language and Cultural Rights in the Ethnic Revival Movement of the Black Tai in Khaoyoi, Petchaburi
- Thai Teachers' Self-assessment and Student Perceptions on the Practice of
Autonomy

Yuttaporn Naksuk

RESEARCH AREA:

- Dialectology
- Burmese language and linguistics
- Historical linguistics



yuttaporn.nak@mahidol.edu

Lecturer

SELECTED RESEARCH/PUBLICATION:

- The Inventive Dhamma Lanna Script for Writing in Sanskrit
- The Revised Prosodic Structure of Khrao Saw: A Proposal
- The Proposed Guidance for Tonal Transcription from Burmese to Thai: An Acoustic-phonetic Comparison Study

Sarawut Kraisame

RESEARCH AREA:

- Acoustic Phonetics
- Phonology
- Sociolinguistics
- Language and speech technology



sarawut.kra@mahidol.ac.th

Lecturer

SELECTED RESEARCH/PUBLICATION:

- Arabic Geminate Consonants in Quran Recitation: An Autosegmental Analysis
- A Metrical Analysis in Quran Recitation
- A Sociophonetic Analysis of Pattani Malay Initial-Geminate Consonants: Implications for Language Variation and Change
- Burmese Speech Corpus for Burmese-Thai Machine Translation

Chingduang Yurayong

RESEARCH AREA:

- Historical linguistics
- Language typology
- Pragmatics
- Indo-European, Uralic & Altaic linguistics



chingduang.yur@mahidol.edu

Lecturer

SELECTED RESEARCH/PUBLICATION:

- Sinitic as a typological sandwich: Revisiting the notions of Altaicization and Taicization
- Altaicization and De-Altaicization of Japonic and Koreanic
- Predicative possession in Novgorod Birch Bark documents in the Ural-Altaic context
- Areal-linguistic approach to the diversity of the generic term for 'music' in the world's languages